



International Network of  
**H**health  
**P**romoting  
**H**ospitals & Health Services

Prof. Dr. Hanne Tønnesen CEO  
International HPH Secretariat, WHO CC



Organogram 2011.doc - Microsoft Word

Eller Rediger Vjs Indsæt Formater Funktioner Tabel Vindue Hjælp

Skriv et spørgsmål

Normal + Calibri, Calibri 12

World Health Organization Bispebjerg University Hospital

## WHO Collaborating Centre

RESEARCH EDUCATION SCIENTIFIC JOURNAL HPH CLINICAL EFFECT DATABASES

Project Activity

Tegn Autogifurer

Side 1 Sek 1 1/1 Pos 20,6 cm Li 21 Kol 1 INDS KOR LUV OVR Engelsk (Sto)

Start Jeff Kirk Svane - Inbox - ... Dokument 1 - Microsoft ... Organogram 2011.do... P:\WHO-CC\HPH\work.sl... Microsoft PowerPoint - [... whocc - Windows Intern... 13:51





# WHO Terms of reference

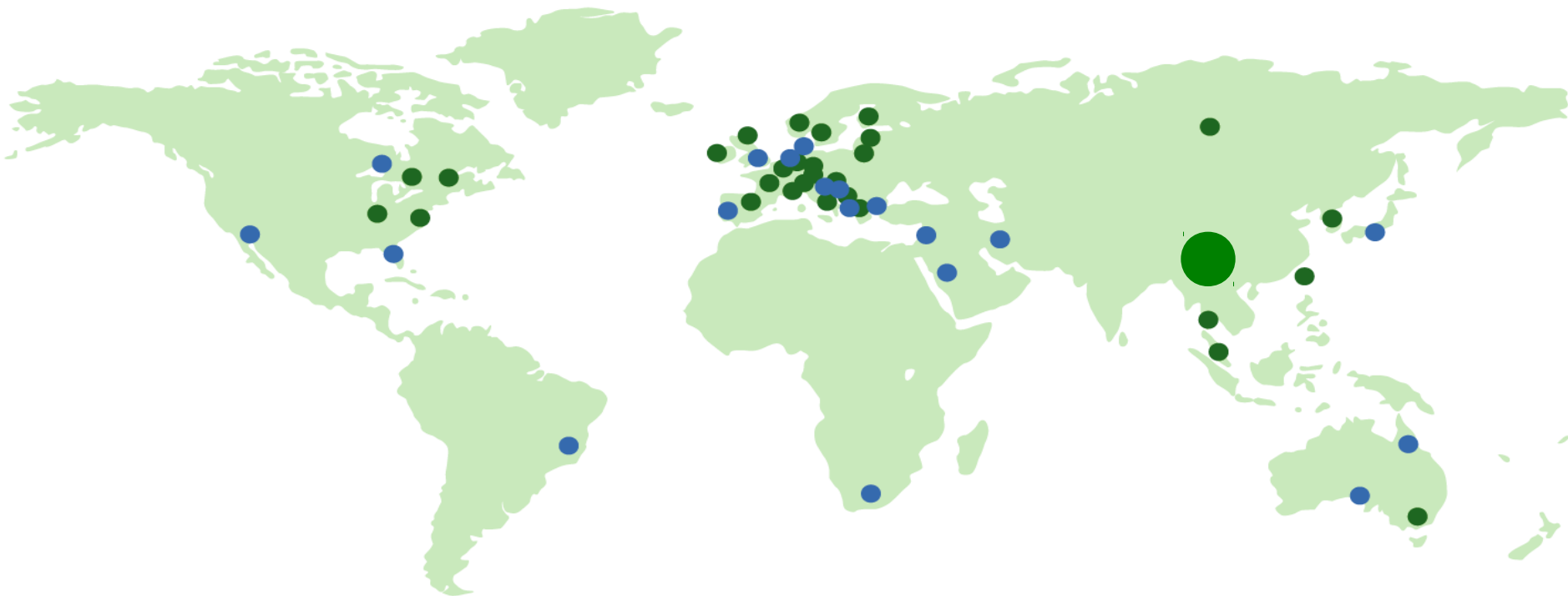
Run the Intl HPH Secretariat

Support countries to:

- Implement WHO principles for HP and use  
HP strategies and standards
- Create further evidence
- Teach and train staff in EB HP
- Implement best EB practice for HP

# HPH World Map

## HPH World Map 2011



● = Country / Region with HPH Network(s)

● = Country / Region with individual hospital or health service HPH Member(s)

# 870 members in total (Jan 2012)



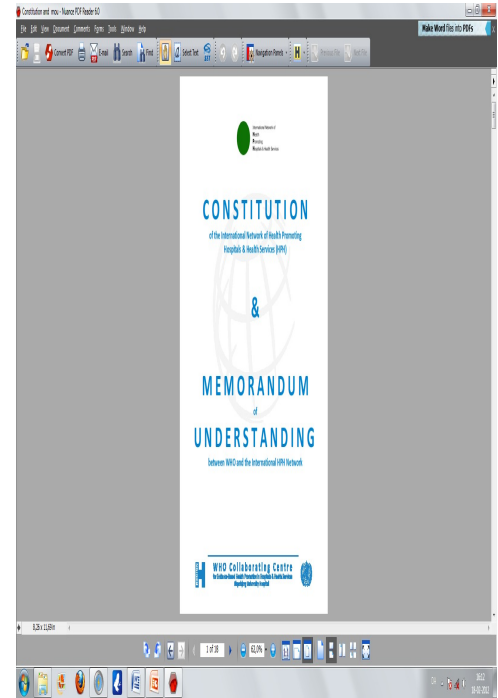
# HPH Constitution

## Mission

- "HPH shall work towards incorporating the WHO concepts, values, strategies and standards or indicators of HP into the organizational structure of the H/HS"

## Vision

- "Increase the contribution of H/HS to better health gain through HP"

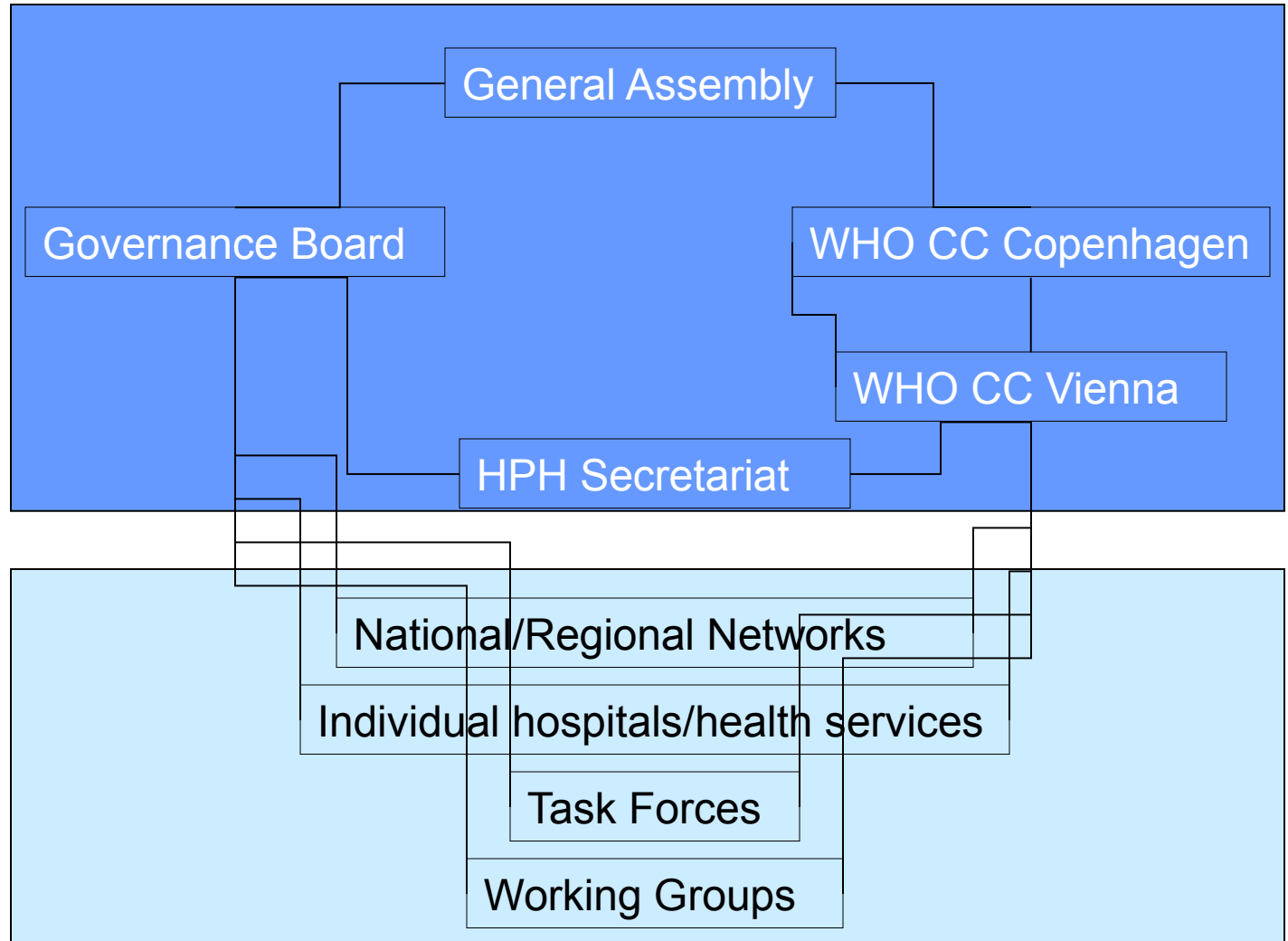


*Ottawa Charter, Budapest Declaration, Vienna Recommendations, Bangkok Charter and WHO Standards for Health Promotion in Hospitals*





# HPH Structure





# Organizational bodies

- **General Assembly**
- National / Regional HPH Coordinators
- WHO CC representatives
- WHO representative (observer)
- Task Force Leaders
- Observers from upcoming networks
  
- **Governance Board**
- 7 elected members (CA, TW, USA, FIN, IT, AUS)
- 2 WHO CC representatives (Vienna, Copenhagen)
- 1 WHO representative





# HPH Task Forces

- Migrant-Friendly & Culturally Competent Health Care **(IT)**
- HP for Children & Adolescents in & by Hospitals **(IT/PT)**
- Psychiatric Services **(D)**
- Tobacco-free United **(D)** (incl. ENSH participation)
- EB Alc. intervention in H&HS **(N)**
- HPH and the Environment **(TW)** (incl. HCWH and WHO participation)



# HPH Working Groups

- HP for Staff and a Healthy Workplace
- Patient Safety
- Health Enhancing Physical Activity
- HP in Non-Hospital Organizations
- HP & Surgery



# HPH History

**1988 – 97** From Project to European Network

**2004** Int. HPH Network and Secretariat

**2005** Gen Assembly & Governance Board

**2008** HPH Constitution

**2009** HPH Strategy

**2010** MoU & New website

**2011** Scientific journal of Clinical HP research and best practice



# HPH Membership

## **N/R Network Member (Corporate Member)**

- Minimum 3 hospitals / health services
- N/R Coordinator and coordinating institution
- HPH Network Agreement with the HPH Secretariat

## **Individual Member Hospital / HS**



# HPH Member Fee/Year

**250 Eur per H/HS, or for bigger organizations:**

0 to 1000 Employees	=	250 Eur
1000 to 2000	=	500 Eur
2000 to 3000	=	750 Eur
3000 to 4000	=	1000 Eur
4000 to 5000	=	1250 Eur
5000 to 6000	=	1500 Eur
(and so forth)		



# Best Evidence-Based HP

Includes three parts

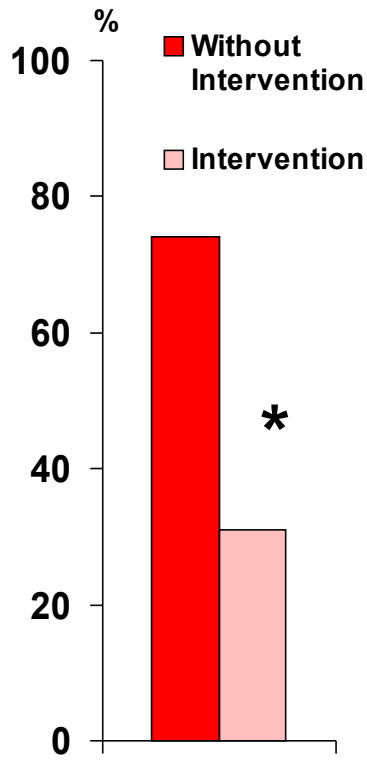


(Sackett, DL, Strauss SE, Richardson WS et al. *Evidence-based medicine*. Churchill Livingstone 2000)



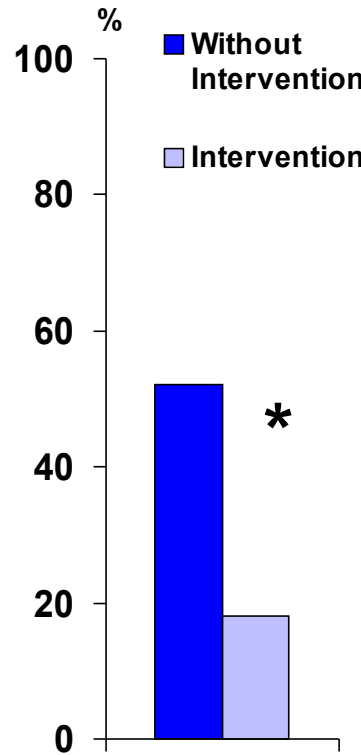
# Ex: Adding HP to surgery

**Alcohol cessation int.**  
Colorectal Resection



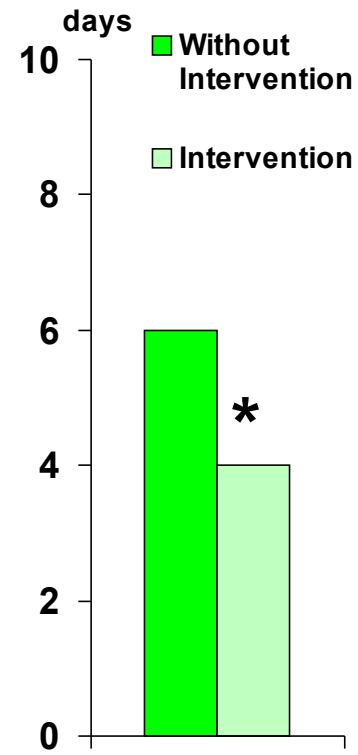
**Postop complications**  
(*BMJ 1999*)

**Smoking cessation int.**  
Hip/Knee Replacement



**Postop complications**  
(*Lancet 2002*)

**Physical exercise int.**  
Spine Surgery



**Postop recovery**  
(*BMC Health Serv Res 2008*)



# WHO-HPH Recognition Project

Clin Dept  
n = 2x44

Intervention  
Data collect

**R**

Control  
TAU

Intervention  
Data collect

**1y**

Control  
Data collect

Site Visit & Data Val







# Ex: Teaching & Training

WHO HPH Schools

PhD Courses

Physicians

Diploma Nurses

Pre-graduate Courses

Master of Clin HP (2012)



# Exchange of knowledge and experience

- International HPH Conference
- National and regional conferences, workshops and meetings
- GA Meeting
- Staff exchange program
- WHO Schools (Summer, Autumn, Winter)
- HPH Newsletter
- Scientific Journal



# [www.hphnet.org](http://www.hphnet.org)

Exchange of knowledge & experience

- HPH Library
- Toolbox
- Reporting HP Standards
- Best practice database (new function)
- Discussion Forum and Project Zones
- News
- Progress reports from Networks & TF



# Conclusion



- Well-established intl network of HPH colleagues with easy and effective ID of collaborators
- Build on existing knowledge and experience in HPH
- Even further inspiration (cases, best practices)
- Education, teaching, staff exchange and training
- Invite internationally to participate in research (TFs & WGs)
- HPH Membership – broad HP framework, technical support, tools etc.
- Opportunity to help the overall improvement of health in H&HS in Thailand and globally
- ..... Synergy (when  $2 + 2 > 4$ )